



SECTOR WORKING GROUP MEETING

20.09.2019

*Sector “Education, Employment & Social
Policy”*

EESP INDICATORS –PERFORMANCE ASSESSMENT FRAMEWORK–



EESP INDICATORS – GENERAL



Indicator

PUBLIC BUDGET ALLOCATED ON EDUCATION OVER THE GDP

PUBLIC BUDGET ALLOCATED ON EDUCATION PER STUDENT

PUPILS/STUDENTS (6-19)/TEACHERS IN PUBLIC CENTERS

Methodology

"Citizen Budget" publication elaborated by the Ministry of Finance

Budget in "Citizen Budget" (MoF) for Education, Science and Sports divided by the No. of students in SSO annual publication "Primary, lower secondary and upper secondary schools at the beginning of the school year"

SSO annual publication "Primary, lower secondary and upper secondary schools at the beginning of the school year". Total No. of students in public centres divided by total full-time teachers in public centres.

Benchmark

EU average

EU average

EU average

Република Северна Македонија
Министерство за Образование и Наука



Republika e Maqedonis e Veriore
Ministria e Arsimit dhe Shkencave

EESP INDICATORS – GENERAL



Indicator

EARLY LEAVERS FROM EDUCATION AND TRAINING

SCHOOL ENROLMENT RATE

EMPLOYMENT RATE OF RECENT GRADUATES (20-34)

Methodology

People aged 18 to 24 who have completed at lower secondary education and are not involved in further education or training, divided by the total population aged 18 to 24.

No. of students (6-19) in compulsory primary and secondary education divided by the total No. of children from 6 to 19 years old. SSO annual publication "Primary, lower secondary and upper secondary schools at the beginning of the school year"

No. of people of 20-34 year olds who graduated in the last 3 years employed divided by the total No. of graduated 20-34.

Benchmark

EU average

EU average

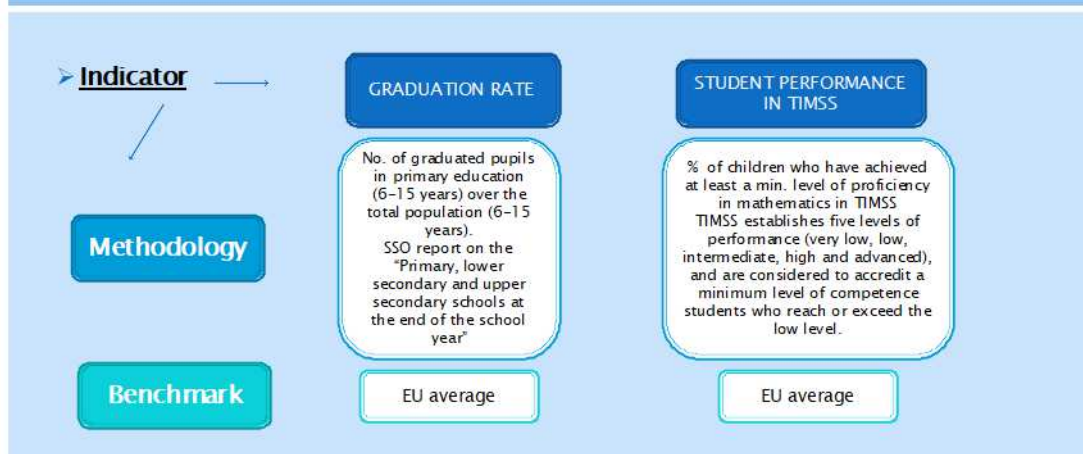
EU average

Република Северна Македонија
Министерство за Образование и Наука

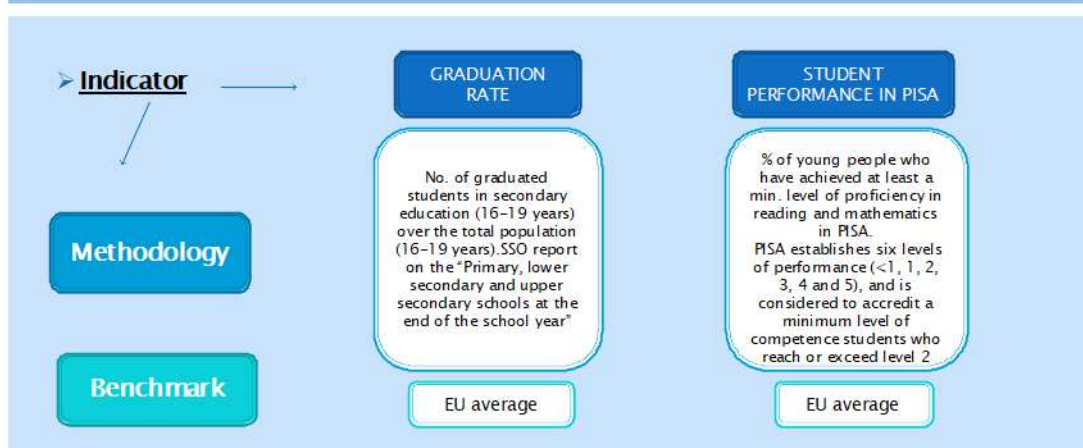


Republika e Maqedonis e Veriore
Ministria e Arsimit dhe Shkencave

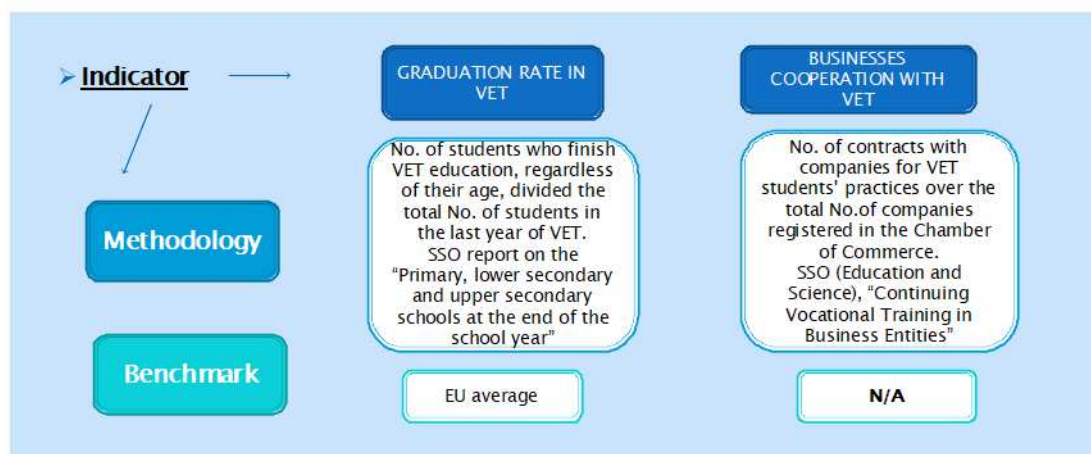
EESP INDICATORS– *PRIMARY EDUCATION*



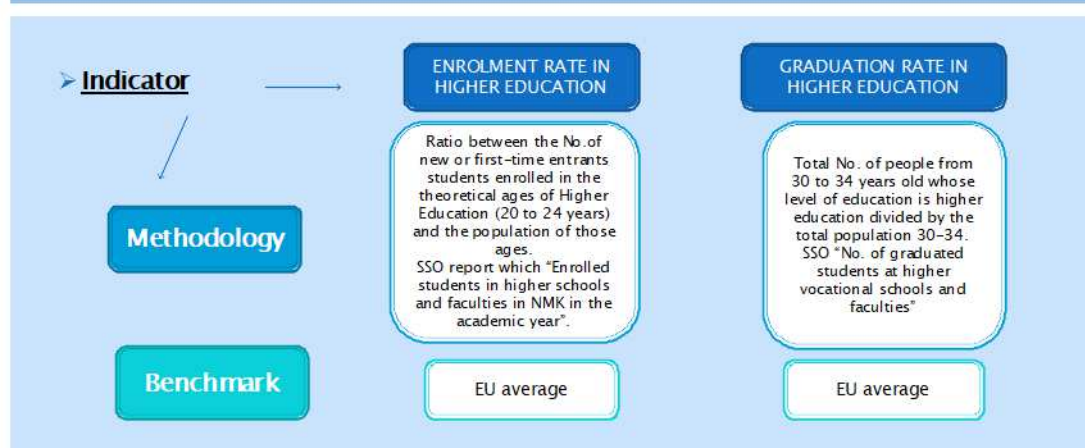
EESP INDICATORS– *SECONDARY EDUCATION*



EESP INDICATORS- *VOCATIONAL EDUCATION*



EESP INDICATORS- *HIGHER EDUCATION*



EESP INDICATORS- *ADULT LEARNING*

➤ **Indicator**

**LIFELONG LEARNING
PARTICIPATION RATE**

Methodology

No. of people aged 25-64 receiving formal or non-formal education or training in the period of reference divided by the total population aged 25-64. SSO "Adult Education in the Republic of Macedonia Results from the Adult Education Survey", 2016 together with the "Labour Force Survey" 2017.

Benchmark

EU average

Република Северна Македонија
Министерство за образование и наука



Republika e Maqedonis se Veriore
Ministria e Arsimit dhe Shkencës

Thank you for your attention!

Ivana Popovska
IPA Coordinator
Ivana.batinik@mon.gov.mk
EU department- MoES

Република Северна Македонија
Министерство за образование и наука



Republika e Maqedonis se Veriore
Ministria e Arsimit dhe Shkencës